

High-Quality Modular Cabins (FR Rated / Solar / Standard)



Our Services & Products

High-Quality Modular Cabins

- ◆ Security Cabins
- ◆ Office Cabin
- ◆ Solar Cabin Solution
- ◆ VIP Valet Cabin
- ◆ Toilet Cabins
- ◆ Container Bus Stands
- ◆ Modular Bus Shelters
- ◆ Prefab House
- ◆ Modular Majlis Concept

Solar Systems

- ◆ Solar Road LED Studs
- ◆ Traffic /Emergency Lights
- ◆ LED Bollards
- ◆ LED Street Poles
- ◆ Road LED Solar Type
- ◆ Solar Harvesting Solution

ACP & Kiosk Works

- ◆ Aluminium Cladding Works
- ◆ LED Kiosks / LED Screens / LED Signages
- ◆ Building Cladding Works
- ◆ Villa Cladding Works

General Trading

- ◆ Ergonomic Chairs
- ◆ French Fragrance Perfumes
- ◆ FMCG Goods
- ◆ Packed Food Supply

For Road Safety

- ◆ Solar LED Bollards
- ◆ Stainless Steel Bollards
- ◆ Turnstile Gates
- ◆ K4 Bollards PAS Type

Road Marking & Safety Accessories

- ◆ In-house Road Marking
- ◆ Parking Junction Road Marking
- ◆ Wheel Stoppers
- ◆ Speed Breakers
- ◆ V Angle Safety Pillars
- ◆ Road Safety Studs
- ◆ Road Signages
- ◆ Safety Convex Mirrors

Our Clients



About Us

ESPECTRO General Trading is a team of professionals whose prime expertise is based on Drive and `Control` Technology. We offer complete solutions for your projects involving High Quality Portable Cabins, Modular Offices, Mobile Kiosks, Free House Design (Exclusive Concept), Thermal Paint Industry, High End Safety Equipment's, Road Marking Jobs, Parking Management System etc. Since the inception of the companies under the same ownership & group, Espectro General Trading was formed to formulate a new line of business by implementing our best expertise and experience.

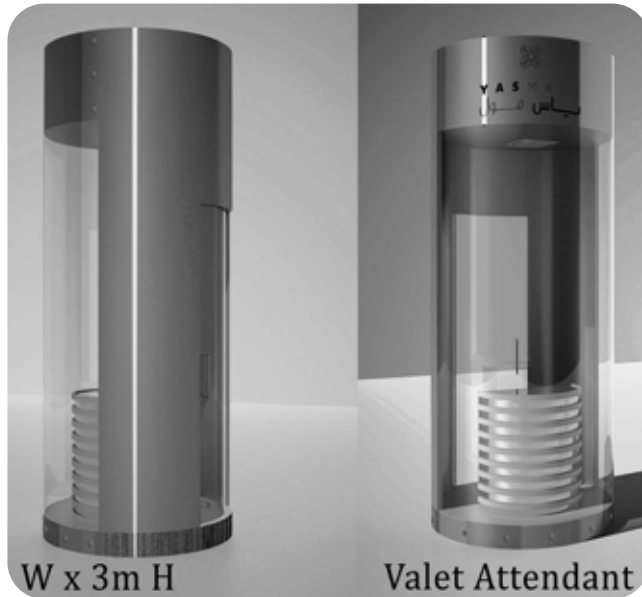
Our Business Group

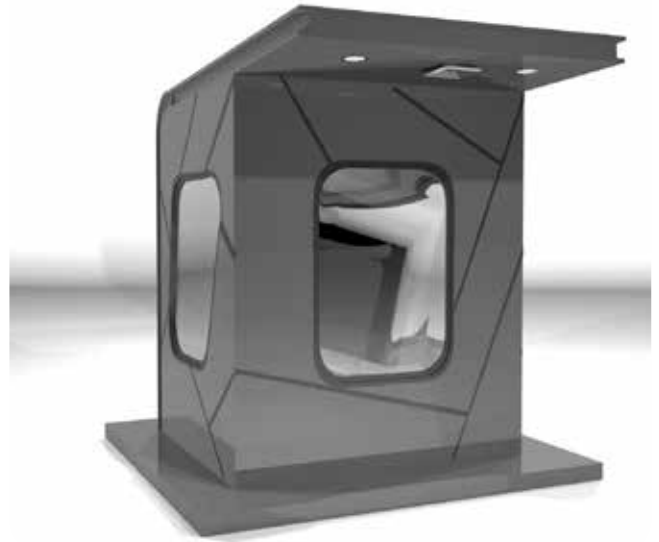
- ◆ **Espectro General Trading**
(Dubai – UAE)
Since 2015
- ◆ **Al Dhelal Building Contg. LLC**
(Dubai – UAE)
Since 2002
- ◆ **SARCO Carpentry**
(Sharjah – UAE)
Since 1985
- ◆ **SARCO Building Contg. LLC**
(Ajman – UAE)
Since 2002
- ◆ **SARCO Aluminum Workshop**
(Ajman – UAE)
Since 2004
- ◆ **SARCO Building Contg. LLC**
(Sharjah – UAE)
Since 1996
- ◆ **Al Tamayyoz Scaffolding & Building Contg.**
(Sharjah – UAE)
Since 1991
- ◆ **Luxury Touch Technical Works LLC**
Dubai- UAE
- ◆ **Welder Steel Fabrication**
Abudhabi- UAE

Our professionals devise ingenious solutions to all kind of complexity no matter how complex the project is. All our products have undergone extensive quality assessments to ensure their efficiency & durability.

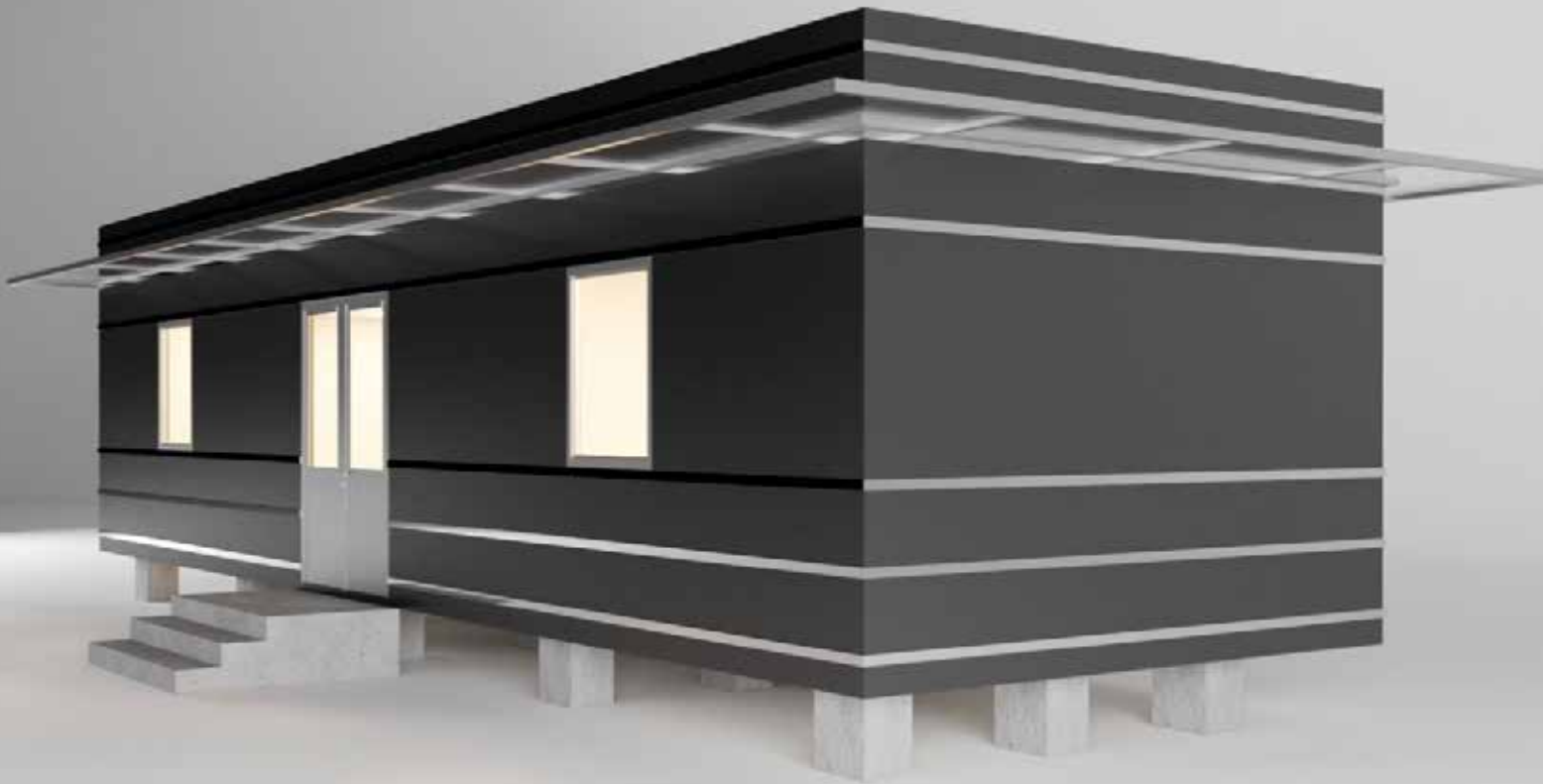
ESPECTRO General Trading extensive portfolio makes us one of the most preferred security equipment providers and automation analysts in the entire region. The framework of our business is built on: Outstanding Achievements, Teamwork, Leadership and Responsibility.

Modular Units









ESPECTRO CABIN SPECIFICATION

<p>FRAME</p>	<p>100 x 50 x 3mm hot drawn channel made of mild steel (MTC CERTIFIED) 50 x 50 x 2mm hot drawn channel made of mild steel (MTC CERTIFIED) 50 x 25 X 2mm hot drawn channel made of mild steel (MTC CERTIFIED)</p> <p>KEY FEATURES:</p> <ul style="list-style-type: none"> i. Frameless appearance / Structure Integrity ii. 2mm Steel Tube Thickness iii. Jotun Red-oxide Primer iv. Jotun Epoxy for Weather Proofing
<p>ROOF</p>	<ul style="list-style-type: none"> i. Mild Steel Structure supported according to size and wind-load ii. ACP Roof Sheets Sealed with German Silicon for Joints.
<p>CEILING & LED</p>	<ul style="list-style-type: none"> i. 60x60 Gypsum Frosted Design False Ceiling 0.7mm Thickness-KSA DONN ii. 1 Nos. LED Lights SILEX-PHILIPS TECHNOLOGY iii. Entire Suspensions with 1.5-2mm Thickness-KSA DONN
<p>WALLS</p>	<p>Internal: 3mm Aluminum Composite Panel Wall with Light Weight Graypore 290 Thickness 50mm Insulation.</p> <p>KEY FEATURES:</p> <ul style="list-style-type: none"> i. Sculptured look / Easy replacement of walls if ever damaged / Weathered tight system / Utilized strength / Sound proof / excellent insulation against hot and cold weather/ Water Resistant. <p>External: 3mm Aluminum Composite Panel Wall decorated with high quality stainless steel 3cm Width x 0.80mm Thick Stainless-Steel Strips 304 Taiwan as per proposed design.</p> <p>KEY FEATURES:</p> <ul style="list-style-type: none"> 1. Harsh weather resistant / Smooth Look
<p>FLOOR</p>	<p>KEY FEATURES:</p> <p>50 x 50mm x 2mm Thickness mild steel square tube with RAMCO Hi-Chem 18mm FR Cement Board. 60x06 RAK Floor Tiles Fixed with Danube MAPEI Glue. Entire flooring will have weather resistant capacity.</p>
<p>SINGLE DOOR</p>	<p>1 No. Al Ghurair Aluminum New Series with Jotun Powder Coating for Extensive Long-Life Durability. Heavy Duty Iron Mongers, Keyed Door Lock and Weather stripping.</p> <p>KEY FEATURES:</p> <ul style="list-style-type: none"> i. Aesthetically Pleasing/Super Secured/Less Maintenance/ Easy Adjusting. ii. Half Vision Glass & Half ACP with External or Internal Wall Color ACP Sheets

<p>WINDOWS</p>	<p>2 Nos. Al Ghurair Aluminum New Series 5cm Width Sliding Window Frame System with Jotun Powder Coating to match cabin external body color.</p> <ul style="list-style-type: none"> • 6mm Single Glazed brown tinted Guardian UAE glass with heavy duty weather stripping & channels.
<p>GLASS</p>	<p>Front Fixed Window with Guardian Glass Tempered with Anti-Fog function. Double Glazed Fixed Window Glass (12mm)</p>
<p>ELECTRIC SWITCH / SOCKETS / CABLE WIRES</p>	<p>National Cables U.L. approved system, Lights wired to N.E.C. standards. Load center is 40-63 Amp 120/240 V, Single phase, 6mm 3 Core wire 8 Pole. Flush mounted in sheet metal cabinet for concealing site connections. Duplex outlets and LED lights with single pole wall switch. 2 Nos. Double Socket with USB Function. 1 Nos. 2 Gang Switch</p> <p>KEY FEATURES:</p> <ul style="list-style-type: none"> i. All cabins come pre-wired and without exclusive under counter cabinet for concealing site connections and ease of installation.
<p>AIRCONDITION</p>	<p>Super General Air-Conditioner R410 HVAC 1 Ton or 1.5 Ton or 2-Ton Split Unit</p> <p>KEY FEATURES:</p> <ul style="list-style-type: none"> i. Indoor Unit Wall Mounted ii. Outer Unit Fixed With 2.5 Inch Fixed Bolt with MS 50x25x1.5mm Frame on Rear Side of Modular Unit.
<p>WEATHER PROOFING</p>	<p>All cabins are weather-tight for interior and exterior use. All seams and joints are pressure tolerance. All openings are fully weather stripped. Floor underside is coated if portable.</p> <p>KEY FEATURES:</p> <ul style="list-style-type: none"> i. Easy replacement/excellent energy and sound efficiency.
<p>INSTALLATION</p>	<p>Units are mobilized as a complete unit system, fully wired, fully glazed being a modular system or to be assembled at site for permanent system.</p> <p>KEY FEATURES:</p> <ul style="list-style-type: none"> i. Simplified installation/Instant usability/Easy relocation.



شهادة تسجيل

تشهد مؤسسة محمد بن راشد للتنمية المشاريع الصغيرة والمتوسطة بأن المنشأة المذكورة أدناه مسجلة لدينا بعضوية رقم (5288) اعتباراً من الثامن من أكتوبر 2018 في برنامج المبادرات الحكومية وتعتبر مؤهلة للاستفادة من كافة المميزات وفقاً لأحكام المادة (12) من القانون رقم (16) لسنة 2016.

اسمها: **اسبيكترو للتجارة العامة**

ESPECTRO GENERAL TRADING

وهي صادرة من دائرة التنمية الاقتصادية بدبي برخصة رقم: 737592، لممارسة الأنشطة الاقتصادية التالية:

• تجارة عامة.

العنوان: مكتب 11-301 ملك شركة دبي الوطنية للتأمين - بر دبي - الوطن.

رقم المكتب: +97144415668

الهاتف المتحرك: +971506268665

صندوق البريد: 52013



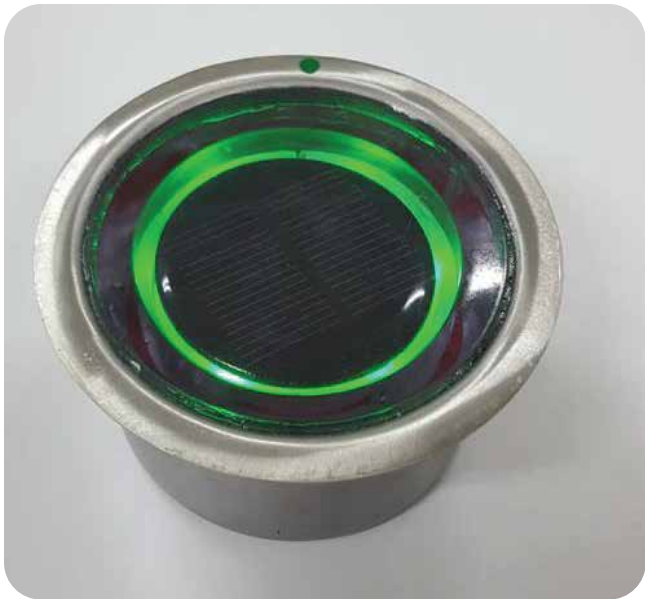
Prefab Mega Units

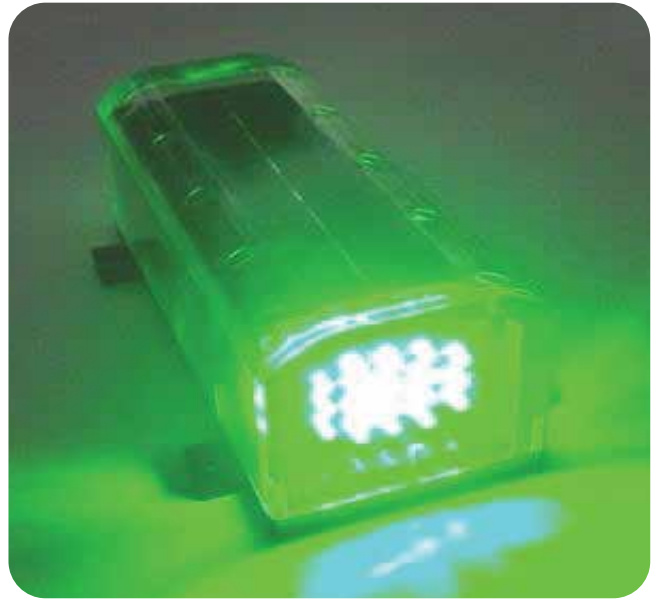






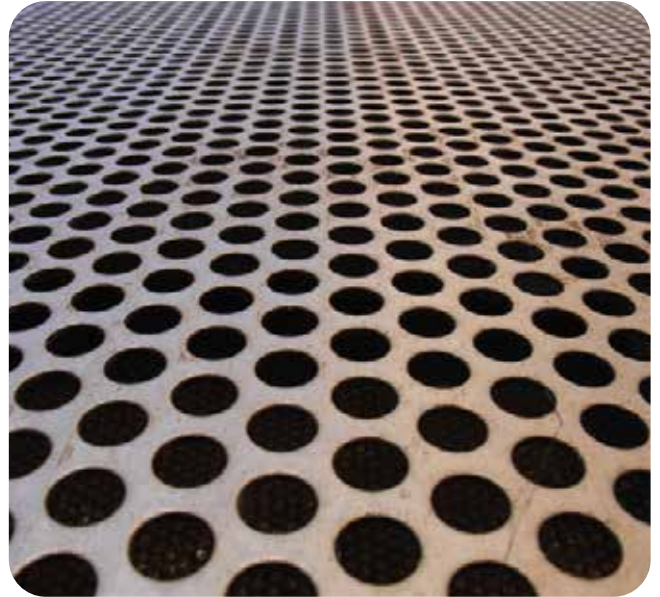
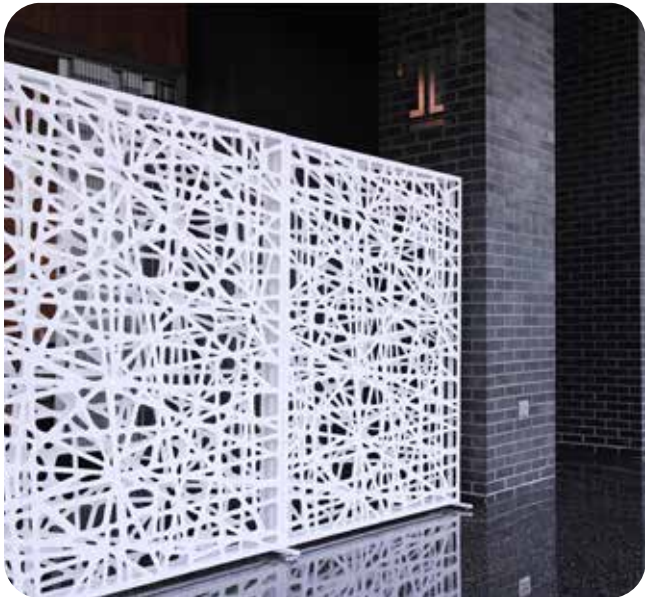
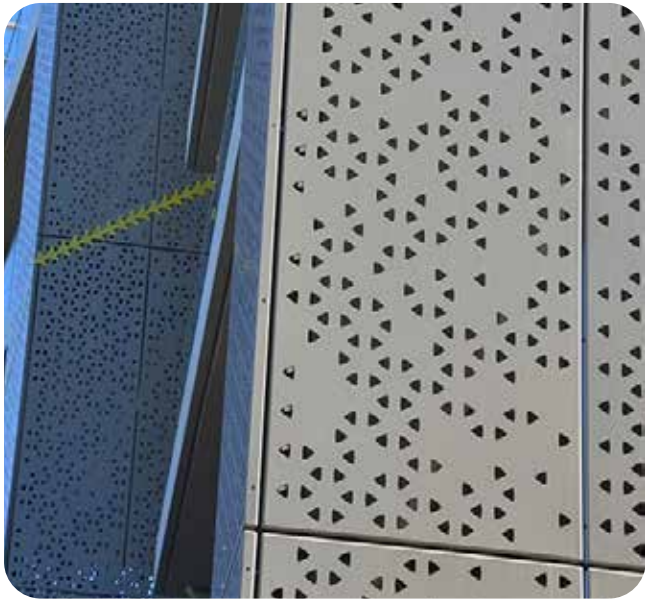
Solar Product Solution

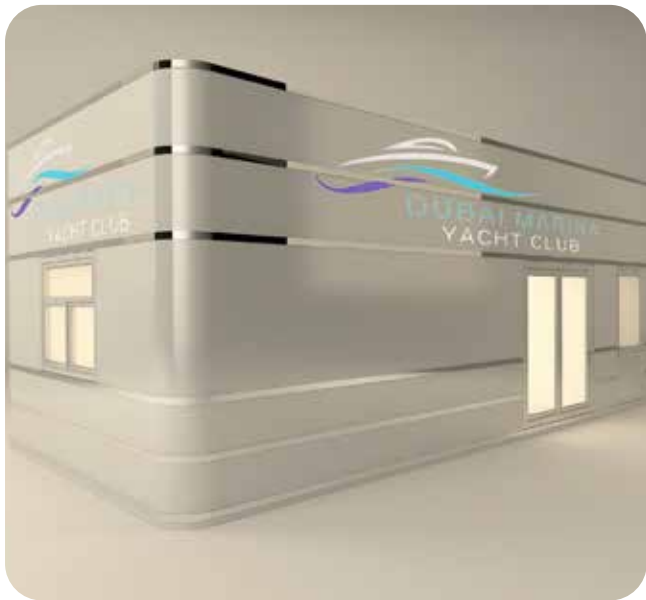




ACP/Laser/CNC/Signage







Road Safety Products





Safety Bollards



Safety Bollards



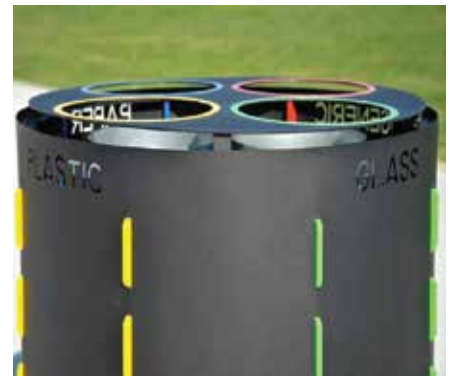
Italian Design Chairs

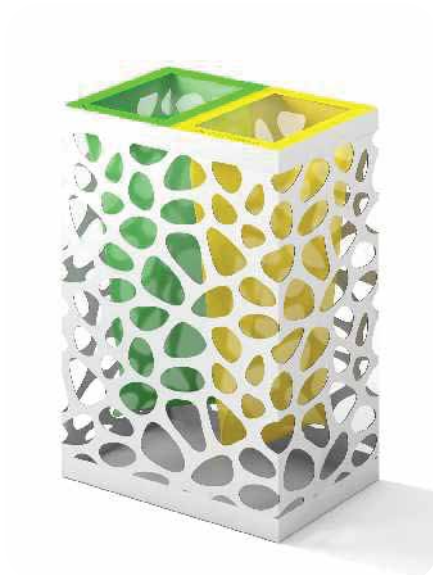
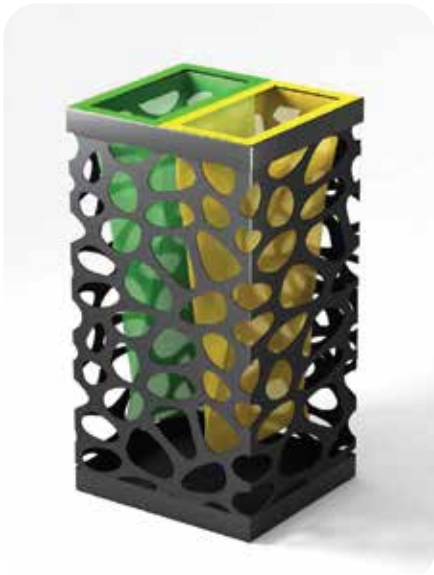






Premium Litter Bins









SPECTRO
GENERAL TRADING



Al Bat'ha Tower, Suite 806,
Corniche Road Sharjah, UAE



(+971) 526422101
(+971) 506268665
(+971) 507659652



sales@espectro-me.com
info@espectro-me.com
mod.odanevents@gmail.com



www.espectro-me.com



www.facebook.com/EspectroME